

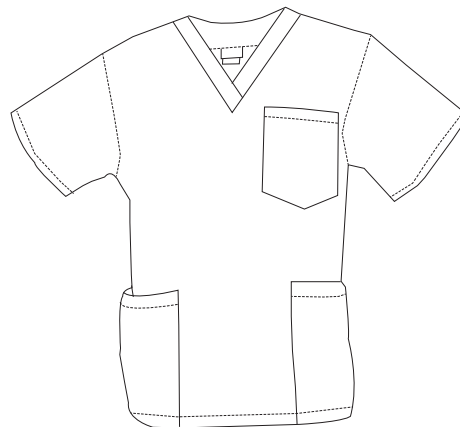


A traditional scrub fit with plenty of pocket space for storage.

Available blank or embellished

Suggested Use: General Practice, Hospitals, Schools, Veterinary, Assisted Living, Hospitality

Suggested pairable scrub pants: 306C



- 65/35 PC Poplin
- Ultra brushed fabric
- Unisex
- V-neck
- Left chest pocket
- Two lower front pockets
- Side vents
- Fabric weight, 4.5 oz.

COLOR OPTIONS

 **Burnt Orange**
PMS Match* 1605C

PACKAGING: Individually polybagged

EMBELLISHMENT OPTIONS

- Embroidery
- Heat Transfer

FABRIC DETAILS



Ultra-Brushed Fabric *Easy care to keep your professional look.*



Always Bright *Vibrant colors that stay fresh and true wash-after-wash.*



Quality-made *Thoughtfully engineered to combine comfort and durability.*

Unisex Sizes: XXS -5X

SIZE	XXS	XS	S	M	L	XL	2X	3X	4X	5X
CHEST	31-33	34-36	37-39	40-44	45-47	48-50	51-53	54-56	57-59	60-63