

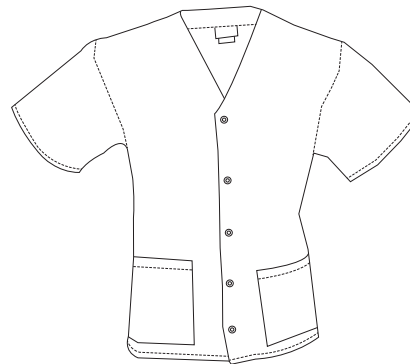


Worn closed as a top or open as jacket, this multi-functional scrub piece provides a comfortable fit.

Available blank or embellished

Suggested Use: General Practice, Hospitals, Schools, Veterinary, Assisted Living, Hospitality

Suggested pairable scrub pants:
330C, 306C, 313



- 65/35 PC Poplin
- Ultra brushed fabric
- Unisex sizing
- V-neck
- Coordinating front snaps
- Two lower pockets
- Fabric weight, 4.5 oz.

FABRIC DETAILS

- Ultra-Brushed Fabric** Easy care to keep your professional look.
- Always Bright** Vibrant colors that stay fresh and true wash-after-wash.
- Quality-made** Thoughtfully engineered to combine comfort and durability.

PACKAGING: Individually polybagged

EMBELLISHMENT OPTIONS

- Embroidery
- Heat Transfer

COLOR OPTIONS

Core

- Black**
PMS Match* Black 3C
- Ceil Blue**
PMS Match* 659C
- Wine**
PMS Match* 209C
- Royal Blue**
PMS Match* 2728C
- Navy Blue**
PMS Match* 282C

Secondary

- Caribbean Blue**
PMS Match* 308C
- Purple**
PMS Match* 2745U
- Hunter Green**
PMS Match* 568C
- Grey**
PMS Match* 430C
- Teal**
PMS Match* 322C
- White**
PMS Match* White
- Khaki**
PMS Match* 4525U

Unisex Sizes: XXS -5X

SIZE	XXS	XS	S	M	L	XL	2X	3X	4X	5X
CHEST	31-33	34-36	37-39	40-44	45-47	48-50	51-53	54-56	57-59	60-63