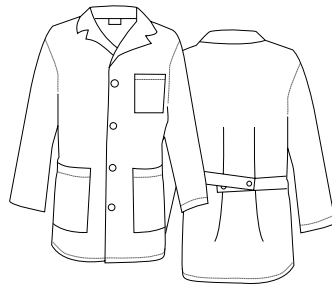




Professional and classic, the 34" Unisex Lab Coat provides the perfect coverage for both men and women.

Side vents on both sides make for easy access to inner pant pockets—a high-demand, hard to find feature. Four front pockets provide ample space for pens, tools and phones.

- 65/35 PC Poplin
- Ultra brushed fabric
- Antimicrobial finish
- Unisex
- Four button front closure
- One chest pocket
- Three lower pockets
- Two button, swing back belt
- Side access vents
- Fabric weight, 5 oz.



Embrace Fresh.

Science and innovation combine to create SILVADUR technology, the intelligent antimicrobial that keeps textiles fresh and odor-free. SILVADUR's patented feature remains active on fabric wash after wash, ensuring longer effectiveness against undesirable bacteria.

COLOR OPTIONS

- White
PMS Match* White

FABRIC DETAILS



Antimicrobial Finish Remains active on fabric wash-after-wash, ensuring longer effectiveness against undesirable bacteria.



Ultra-Brushed Fabric Ultra-soft 65/35 Poly Cotton blend in classic styles that are fashionably functional and timeless.



Quality-made Thoughtfully engineered to combine comfort and durability.

PACKAGING: Individually polybagged

EMBELLISHMENT OPTIONS

- Embroidery
- Heat Transfer

SIZE CHART

Unisex Sizes: XXS -8X

SIZE	XXS	XS	S	M	L	XL	2X	3X	4X	5X	6X	7X	8X
CHEST	30-33	34-37	38-40	41-43	44-47	48-52	53-55	56-58	59-62	63-66	67-71	72-76	77-82